

Your Ref:	Quantity:	Product Code: PS0002
Our Ref:	Version: 1	Product Colour: PARSLEY

PRINTING CONCERNS:

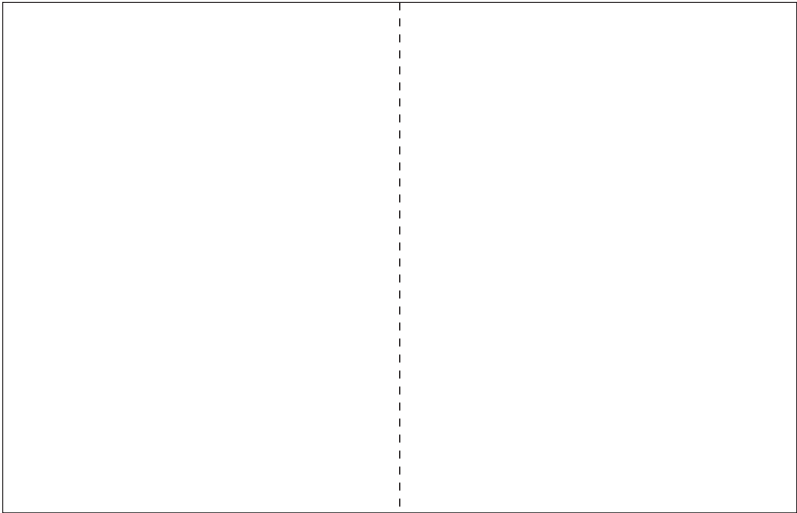
PRODUCT INFO:

We stock this item in the following colours

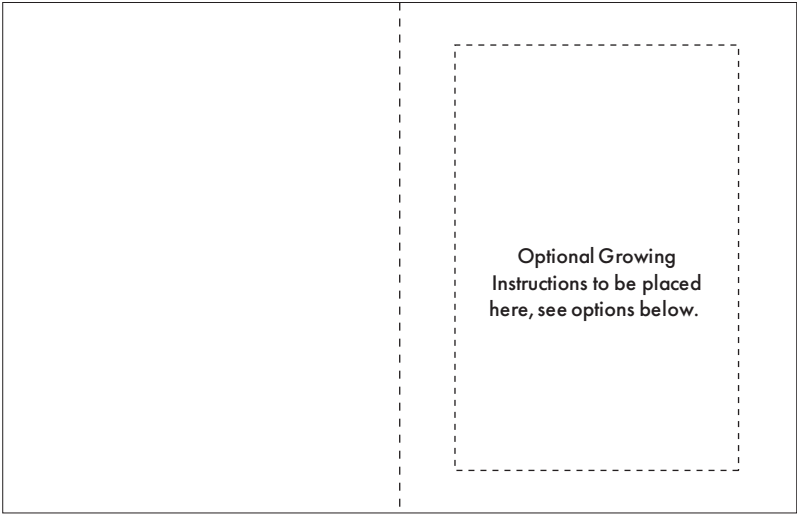
PANTONE REFERENCE(S)

Full colour

ARTWORK SCALE 75%



REAR (when folded) FRONT (when folded)



INNER LEFT (when folded) FOLD INNER RIGHT (when folded)

Product Image for visualisation
- colours may vary



The dashed line is to demonstrate print area and will not appear on your printed item

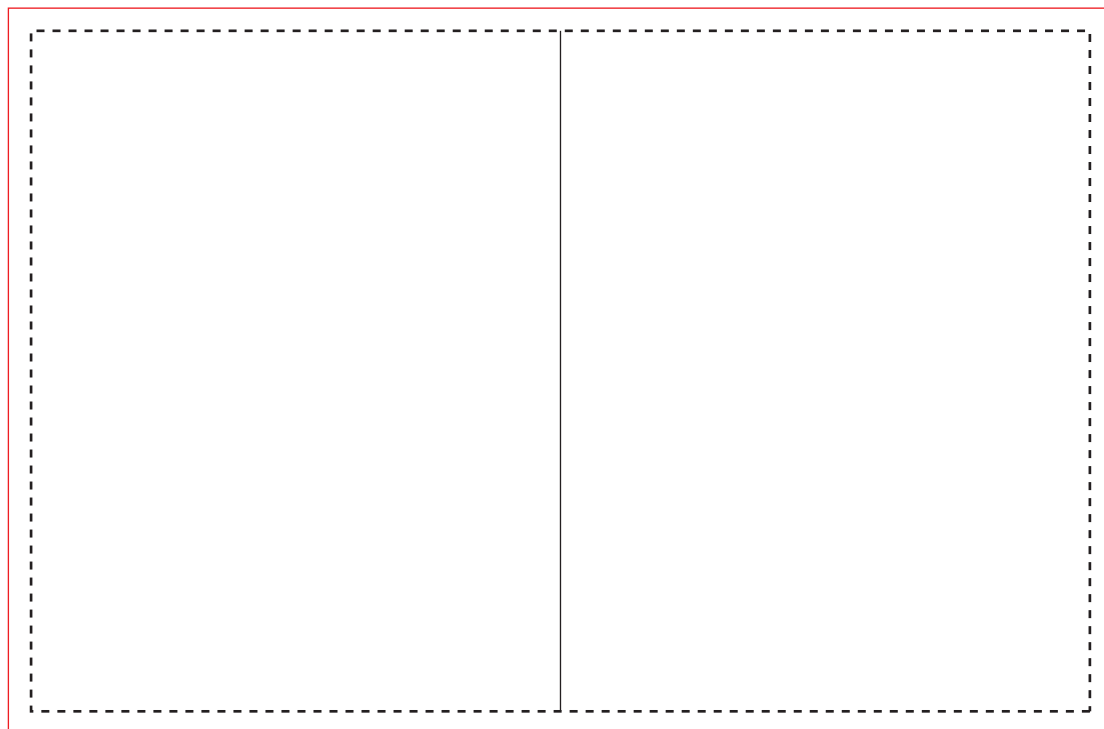
PLEASE NOTE:

- All colours including print and product are for visual purposes only and should not be regarded as the actual colour of the product and print.
 - Some products may vary from batch to batch and may differ from previous orders.
 - The colour and texture of a product can also have an effect on the final print colour.
 - By approving this order we accept that you understand these terms.
1. Your order will not go in to print and production time cannot be confirmed, unless artwork has been approved via the online system.
 2. Once printed, artwork cannot be amended, mistakes must be rectified at visual stage.
 3. Claims for faulty goods will be honoured, only if the goods are returned to us. We will not issue credits/refunds for items that have been distributed. Please ensure that goods are satisfactory before distribution
 4. We are not responsible for delays during transit.

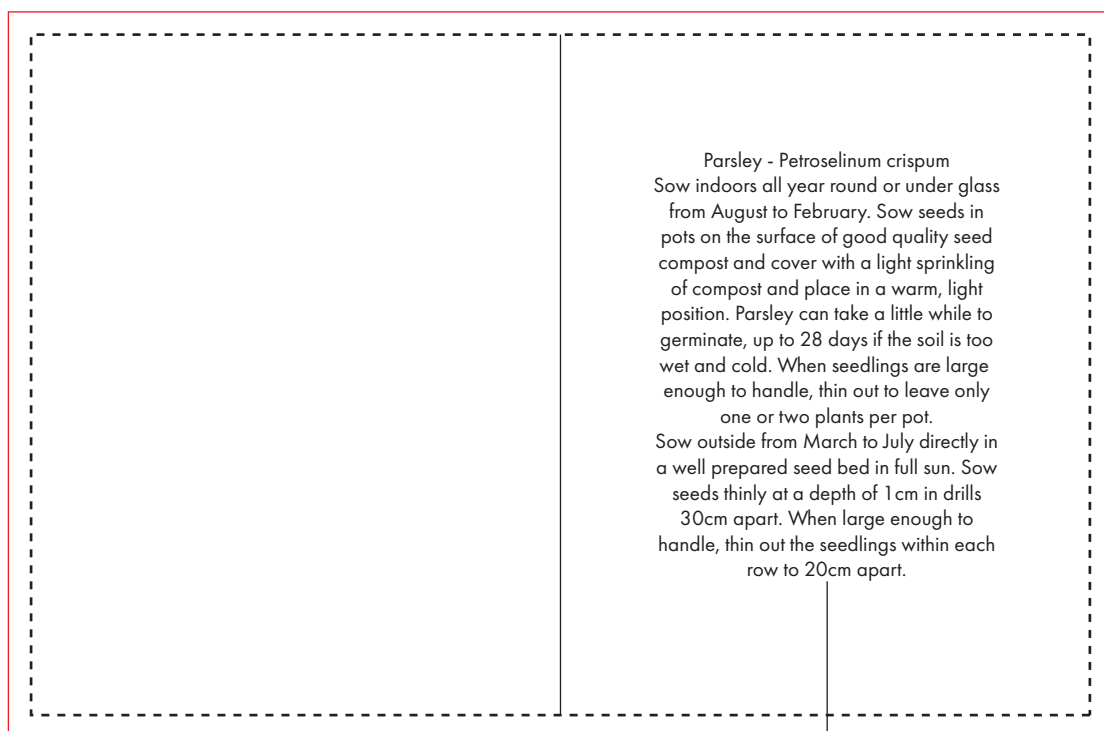
By approving this visual, you are confirming you have thoroughly checked all information, including layout, fonts, spelling, print colours, print size, print position, product, product colour and quantity.

To proceed, please approve visual via the online system.

ARTWORK SCALE 100%
Print Area: 140mm x 90mm



FLOOD RED AREA WITH
BACKGROUND
COLOUR FOR BLEED



FLOOD RED AREA WITH
BACKGROUND
COLOUR FOR BLEED

SUGGESTED
GROWING
INSTRUCTIONS

Parsley - *Petroselinum crispum*
Sow indoors all year round or under glass
from August to February. Sow seeds in
pots on the surface of good quality seed
compost and cover with a light sprinkling
of compost and place in a warm, light
position. Parsley can take a little while to
germinate, up to 28 days if the soil is too
wet and cold. When seedlings are large
enough to handle, thin out to leave only
one or two plants per pot.
Sow outside from March to July directly in
a well prepared seed bed in full sun. Sow
seeds thinly at a depth of 1 cm in drills
30cm apart. When large enough to
handle, thin out the seedlings within each
row to 20cm apart.